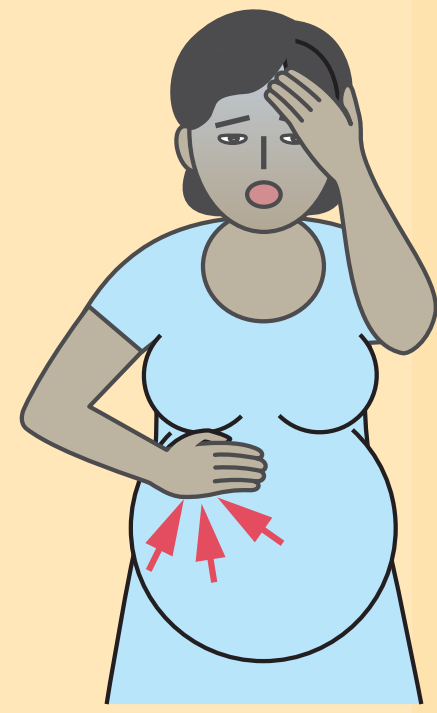


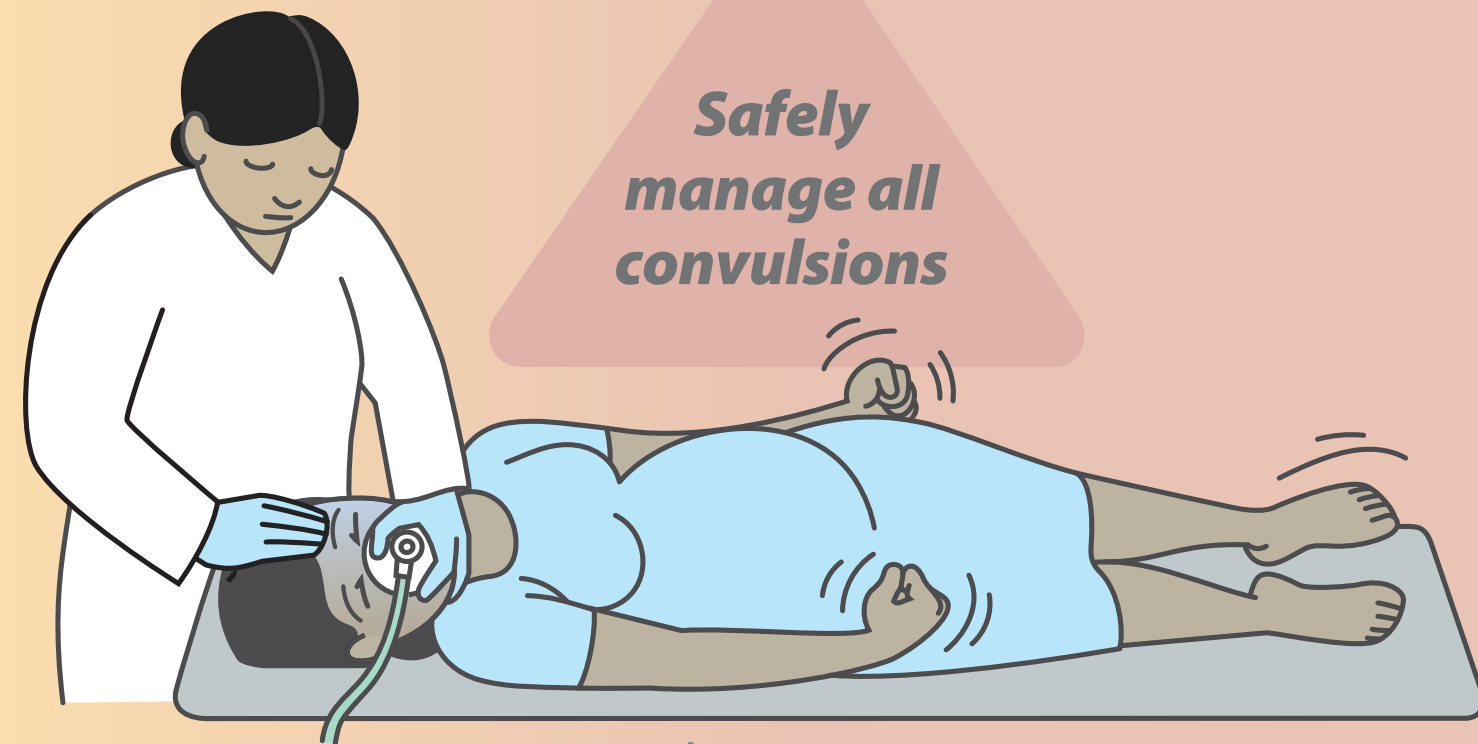
Helping Mothers and Babies Survive Pre-Eclampsia & Eclampsia

ACTION PLAN 2 - ADVANCED CARE

SEVERE PRE-ECLAMPSIA
Pre-Eclampsia and
One or More Danger Signs



ECLAMPSIA
Convulsions or Unconscious



Receive referral OR Continue care

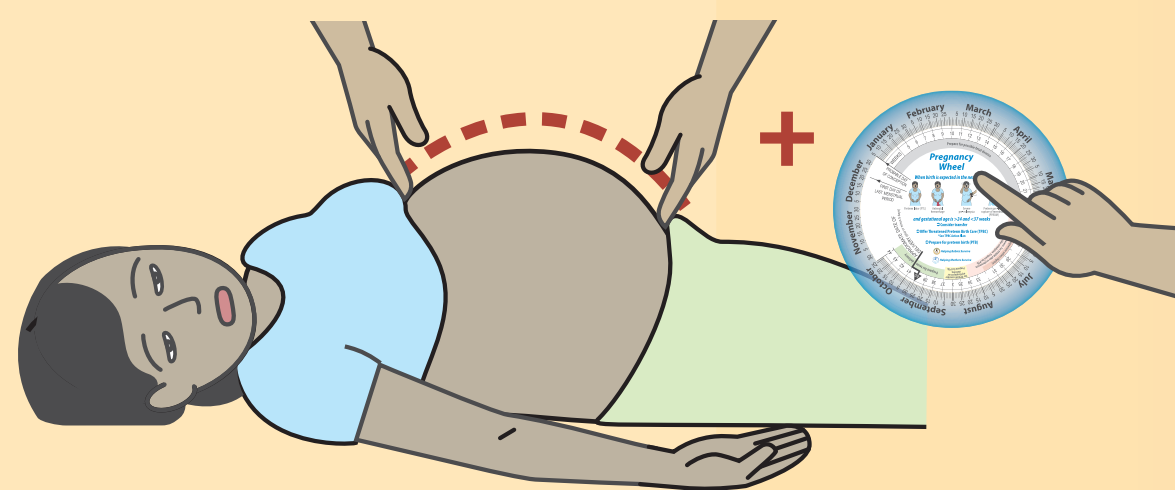
Begin OR Continue MgSO₄

Begin OR Continue medication to reduce severe BP

Continue close monitoring of woman and fetus

Within 4 hours

If no convulsions and conscious



Confirm Gestational Age

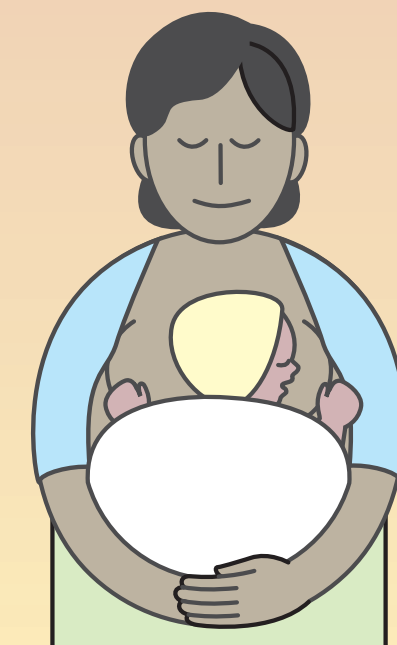
If convulsions or unconscious

Deliver

Continue MgSO₄ for 24 hours after birth or last convulsion

Within 12 hours

Continue medication to reduce severe BP



Provide essential maternal and newborn care

Continue to monitor after birth

Pre-viable

Within 24 hours

End pregnancy

Continue MgSO₄ for 24 hours after birth or last convulsion

Continue monitoring

Viable to < 34 weeks



Give dexamethasone

Admit woman and monitor closely:

- Convulsions
- Uncontrolled severe hypertension
- Worsening maternal condition (danger signs, exam, lab tests)
- Worsening fetal condition or demise
- Reaches 37 weeks 0 days

Yes to any

≥ 34 week to < 37 weeks

Within 24 hours

> 37 weeks