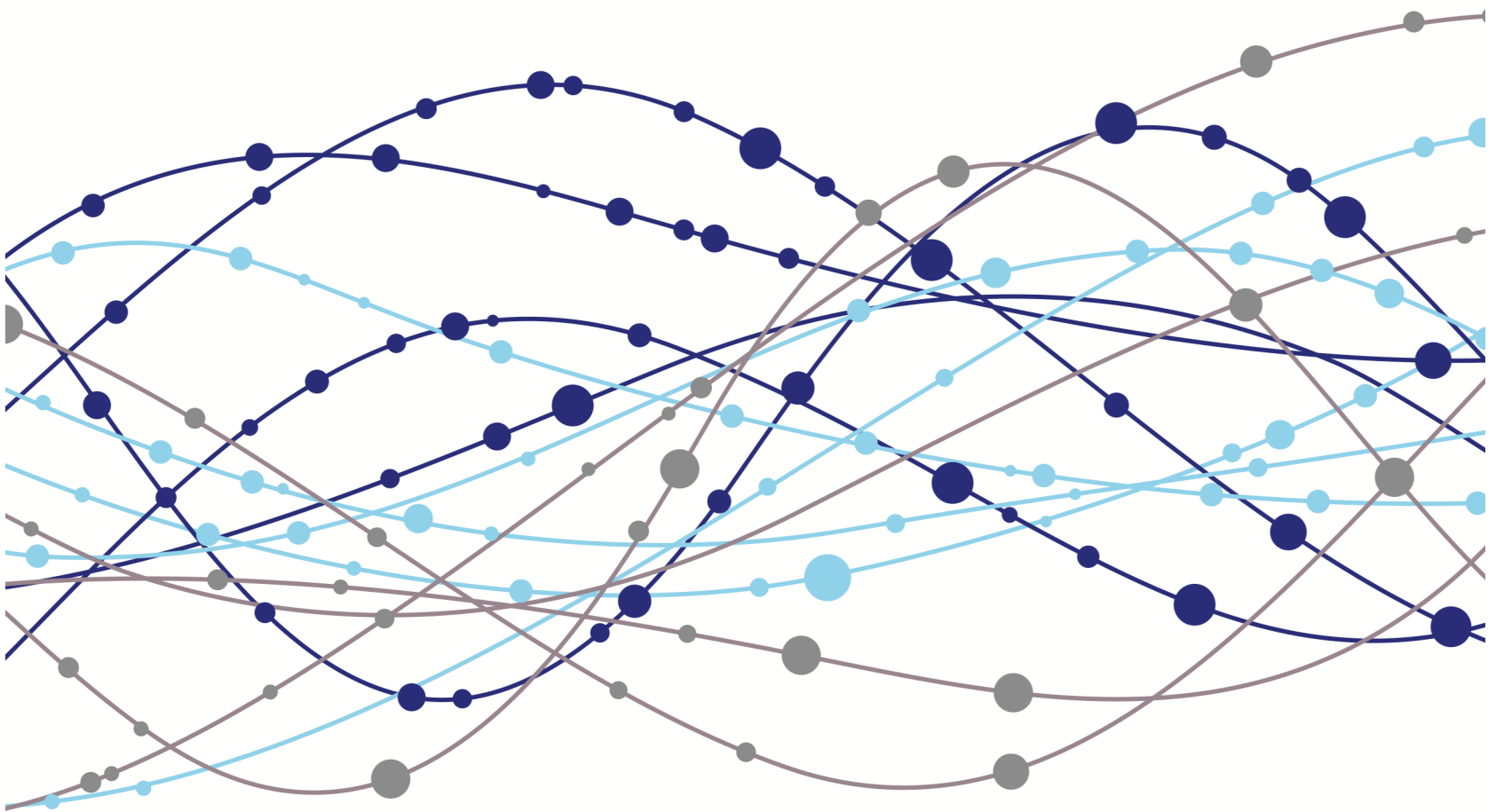

THE EVIDENCE BEHIND MEDICAL MISSIONS

2016 Exploring Medical Missions Conference



#2016EMMC

**EQUIPPING HEALTHCARE PROFESSIONALS
AND STUDENTS TO SERVE THE FORGOTTEN**

Hosted by the Institute for International Medicine, Graceway and ACIHE

WELCOME

Thank you for being part of the eleventh annual INMED Exploring Medical Missions Conference!

This year's theme is The Evidence Behind Medical Missions. Each year some 5,000 health care teams depart North America, bound for a developing nation. On these journeys, they carry a sincere desire for doing good on behalf of the world's most underserved people. And on return, team members usually bring back accounts of both startling human need and acts of profound kindness.

But beyond gestures of compassion, what is the evidence that such service makes a consequential impact on the health of individuals and communities? Throughout this conference we will examine this worthy question from intriguing angles. We will also provide opportunities to expand your global health skills, to clarify your career path, and to connect you with sending organizations and like-hearted people.

Our hope is that these days will inspire your commitment, deepen your resources, and fuel your vision in serving our world's most forgotten people.

Nicholas Comninellis

Nicholas Comninellis, MD, MPH, DIM&PH
President, Institute for International Medicine

Objectives:

- Articulate the characteristics of compassionate health care
- Review disease mitigation strategies
- Discuss strategies to improve community health in a low resource community
- Describe techniques to cross cultural boundaries
- Develop steps to engage into humanitarian health work



Nicholas Comninellis, MD

Table of Contents

Welcome 2

About INMED 3

Corporate Sponsors ---- 4

Individual Sponsors 5

Speakers 6-10

Hosts 10

Shuttle Schedule 11

Exhibitors 12-21

Bookstore Info 23

Continuing Ed. 25

Awards 26-27

Graceway Maps --- 28-29

Schedule 30-33

INMED

The Institute for International Medicine (INMED) exists to equip healthcare professionals and students to serve the forgotten. We are a nonprofit educational organization that offers didactic instruction in international health, diseases of poverty, and community health development via online and in-classroom courses as well as conferences. We also offer supervised international service-learning experiences for healthcare students and professionals at over 45 training sites in 20 low-resource countries.



INSTITUTE FOR
INTERNATIONAL
MEDICINE

We are a nonprofit educational organization that offers didactic instruction in international health, diseases of poverty, and community health development via online and in-classroom courses as well as conferences. We also offer supervised international service-learning experiences for healthcare students and professionals at over 45 training sites in 20 low-resource countries.

Service Learning

Diplomas

International Medicine & Public Health Diploma

International Public Health Diploma

Alumni Opportunities

Alumni Service Program Fellowship



Check out inmed.us to browse our list of international training sites.

Courses

Hybrid Courses

International Medicine & Public Health Intensive Hybrid Course

International Public Health Intensive Hybrid Course

Online Self-Paced Courses

International Public Health
Diseases of Poverty
International HIV Medicine
Cross-Cultural Competency
Disaster Management
International Health Leadership

New! Maternal-Newborn Health

For more information, please visit inmed.us or contact us at:

INMED
2340 E. Meyer Blvd.
Building 1 Suite # 338-A
Kansas City, MO 64132

E-mail: office@inmed.us
Phone: 816-444-6400
Fax: 816-444-6400

CORPORATE SPONSORS

*Kim and Ted Higgins
Family Charitable Trust*

**Kim and Ted Higgins
Family Charitable Trust**

*Hodgdon Family Charitable Fund
Bob Hodgdon
Chris Hodgdon
Erwin Rodriguez*



*HCA Midwest
Corrine Everson
Ashlee Peterson*



*College Park Family Care Center
Tom Miller
Tom Kettler
Mark Kahler*



*Moyes Eye Center
Andy Moyes*



The Butterfield Foundation



*Jack Hill Continuing Medical Education
Foundation
Anne Sly
Tom Coppinger
Marie Delcambre
Charles Luetje*



INDIVIDUAL SPONSORS

Uyiosa Aimiuwu
Kate Alberts
Cecelia Babbott
Bruce Banwart
Andy Bukaty
Troy Burns
Joe Cates
Nancy Crigger
Datcha Dorvil
Mark Duff
Nancy Dye
Roy Elfrink
Colette Fleming
Micah Flint
John Fontenot
Bill Gilbirds
Peter Greenspan
Rebel Gregory
Ted & Kim Higgins
Tom Hodge
Kevin Hubbard
Judi Kangas

Marty Kanne
Spencer Kerley
Ali Khezrian
Gary Kindell
Scott Kujath
Winston Manimtim
Allan Martin
Jose Martinez-Figueroa
Gary McEwen
David McKinsey
Nancy Miller
Andy Moyes
Scott Murphy
Cindy Obenhaus
Reginald Peake
Bruce Pfuetze
Don Philgreen
Rick and Jo Randolph
Dean Reeves
Sequita Richardson
Jesse Roberts

Skylar Rolf
Steve Salanski
Mike Searcy
Stan Shaffer
Cindy Shumpert
Eleni Sourlis
Francie Stoner
Charles Sullivan
Glenn Talboy
Rory Tompkins
Bob Tung
Larry Van Vleet
Mitch Voelker
Jon Wada
Vince Waite
Bill White
Betsy Wickstrom
Gustav Wilde
Audrey Williams
Julie Wood
Jean Young

SPEAKERS



Gary Morsch, MD

Dr. Gary Morsch believes we long to make a positive difference in our world and are uniquely gifted to do so. His own volunteerism has taken him from inner city shelters to rural clinics, from refugee camps to mission hospitals. Wherever you find people in need, you'll find Dr. Morsch.



Brad Gautney, PNP, MPH

Brad is the Founder and President of Global Health Innovations. He designs HIV/AIDS programs in East Africa. Brad designed the HITSystem© which prevents mother-to-child transmission of HIV/AIDS and ensures HIV+ infants receive optimal HIV care. Brad also designs medical programs to assist children rescued from child slavery in West Africa.



Monica Gautney, MA, LPC

Monica Gautney, MA, LPC is passionate about serving marginalized individuals. Monica has served in resource-limited countries for the past 14 years. She lived in Haiti for 4 years with her husband, Brad, implementing educational programs to teach English, coordinating international volunteers, and leading community outreach, and teaching programs for local Haitian children. They worked to provide medical and humanitarian outreach programs. Monica and Brad are the founders of Global Health Innovations, a non-profit that exists to design, implement and manage medical programs focused on providing solutions to save lives.

SPEAKERS



Rick Randolph, MD

Dr. Randolph is the Chief Medical Officer of Heart to Heart International. He has provided primary care, public health and disaster response in the U.S., the Caribbean, sub-Saharan Africa and the Philippines and has served as the Chief Medical Officer of the Ebola treatment unit in Tappita, Liberia. Dr. Randolph is an INMED Alumni.



Lani Ackerman, MD

Lani Kay Ackerman, MD is a family physician and educator who has spent much of her career in the Himalayas, as well as working with refugees. In 1999, while living in Nepal, she and her husband began a grass-roots Christian community development organization which is now fully led by national leadership.



Micah Flint, MPH, DIPH

Micah Flint was INMED's first CEO beginning in 2005, and is now the Chief Innovation Officer. His expertise is in disaster management, innovative entrepreneurship, and program evaluation. Micah is married to INMED graduate Jennifer Rathburn, a pediatric critical care physician. They express their passion for international health service by volunteering at the Baptist Medical Centre in Ghana along with their two daughters.

SPEAKERS



Nicholas Comninellis, MD, MPH

Dr. Comninellis is President of INMED and board certified in both public health and family medicine. Nicholas trained in tropical medicine at the Walter Reed Army Institute of Research, and served four years in Shanghai, China, and Angola, Africa. Today he teaches public health at the University of Missouri-Kansas City.



Wendy Nyhus, BSN, RN, CMSRN

Wendy Nyhus, BSN, RN, CMSRN is currently working as a medical-surgical nurse at St. Luke's East Hospital. Wendy has served as a nurse in long term placements in Swaziland and Ghana, Africa. Wendy states she is, "incredibly grateful for each and every opened door she is allowed to walk through internationally and domestically as she seeks to fulfill the Great Commission."



Ted Higgins, MD

As a resident physician, Dr. Higgins served a three month surgical elective at Hospital Albert Schweitzer in Haiti where he was mentored by Dr. William Larimer Mellon. The experience proved pivotal for this young physician who, in addition to his private practice in the United States, has been providing surgical care in the Dominican Republic each year since 1995.

SPEAKERS



Jeff Adams, PhD

Jeff Adams, PhD is the senior pastor of Graceway Church. Prior to this, Jeff spent ten years pastoring in Latin America with his wife Cheryl and daughters, Sarah and Rebekah. He was gifted with the Spanish language while abroad and keeps it up by sharing his passion for the Word of God in English and Spanish at Graceway and as an international conference speaker.



Jay Grimwood

Jay Grimwood, is the International Development Pastor of Graceway Church and has led international teacher training teams to South Korea, the Philippines, and Mongolia. He has also been involved with educational and humanitarian programs in Egypt, Zambia, Japan, Taiwan, and Kurdistan.



Joseph LeMaster, MD

Joseph LeMaster, MD is a healthcare provider to refugees and "newcomers" at the University of Kansas Medical Center. He served in medical missions in Nepal from 1990-2000.

SPEAKERS



Daniel O'Neil, MD

Daniel O'Neil, MD is the Assistant Clinical Professor of Family Medicine at the University of Connecticut School of Medicine. He studied tropical medicine and served on multiple health and development projects in Latin America, West Africa, Indonesia, Middle East and North India. He is Managing Editor of the peer-reviewed Christian Journal for Global Health.



John Gibson, MD

John Gibson, MD has worked for over 20 years as a medical missionary in Thailand and for the last 12 years in medical education and global health. Currently, he is the director of Rural Medical Training at UNT HSC in Ft. Worth, Texas. Dr. Gibson is an INMED faculty member for the International Medicine & Public Health Hybrid Course and Ultrasound for Primary Care Course.

HOSTS



INSTITUTE FOR
INTERNATIONAL
MEDICINE



FREE SHUTTLE

Shuttle Schedule

Van will shuttle attendees between the Adam's Mark Hotel and Convention Center and Graceway Church

Friday, May 20, 2016

Depart hotel: **7:45 8:00, 8:15 AM** (please be at the doors by 7:45 AM)

Depart Graceway: **5:50, 6:05, 6:20 PM** (please be at the doors by 5:50 PM)

Saturday, May 21, 2016

Depart hotel: **7:45 8:00, 8:15 AM** (please be at the doors by 7:45 AM)

Depart Graceway: **12:15 PM** (please be at the doors by 12:15 PM)

THANK YOU!

A Special Thank You to the Following...

Graceway Staff Team

Silber Spoons Catering

Conference Volunteers

Cherish Andrea Photography

Emily Marriott -Videographer

Our conference sponsors and student scholarship donors

EXHIBITORS

Heart To Heart International

Booth 101

<http://www.hearttoheart.org/about/>
Jillian O'Connell
jillian.oconnell@hearttoheart.org
(913) 764-5200



Heart to Heart International has been creating a healthier world since 1992. Our mission is to improve global health through initiatives that connect people and resources to a world in need. Through our mobilization efforts, we provide medical education, deliver medical aid, respond to people in crisis and address community-health concerns around the globe.

Mission Nation Travel

Booth 102

<http://www.missionnation.com/home>
Randy Whiting
Randy.Whiting@MissionNation.com
(954) 947-2822



Mission Nation Travel is dedicated to providing complex international travel solutions for faith-based, humanitarian, and group travel. Our combined 265 years of humanitarian travel expertise, industry relationships, and specialized airfares enable us to deliver exceptional service and value. Our commitment is to personable and long-term caring client relations. www.MissionNation.com

Interserve USA

Booth 103
 INTERSERVEUSA

<http://www.interserveusa.org>
Theresa Gabel
theresa@ludlow.net
(800) 809-4440

We are a community of Christian professionals serving the marginalized peoples of Asia and the Arab world. We offer tailored short-term and long-term placements for medical professionals, as well as medical electives for medical school seniors. For information, email OT@ludlow.net or browse our website (www.interserveusa.org).

EXHIBITORS

Medical Missions Foundation

Booth 104

<https://www.medicalmissionsfoundation.org>
Katie Hudson
katie@medicalmissionsfoundation.org
(913) 338-0343



Our mission is to provide surgical and medical care in underserved communities throughout the world and to positively impact the lives of children and their families.

All God's Children

Booth 105

<http://allgodschildrenkc.com>
Vicki Cooper
vickidhc@aol.com
(816) 853-6521



All God's Children is a Christian compassion organization that seeks ways to help the lost, sick, oppressed, poor and vulnerable children in practical ways. We primarily work in rural Zambia. We are presently building the Murundu Mission Hospital of Hope. Our mission is to provide quality, affordable medical care.

Groundup Aid Foundation

Booth 106

<http://www.groundupaf.org>
Tom Abrams
tom.abrams@groundupaf.org
(913) 558-2414



Groundup Aid Foundation is a healthcare-based community development organization that facilitates growth and inspires long-lasting success in communities of need. At this time our healthcare efforts are focused in Siuna, Nicaragua.

EXHIBITORS

Association of Baptists for World Evangelism

Booth 107

<http://www.abwe.org>
Melissa Friesen
mfriesen@abwe.cc
(717) 774-7000



Since its inception, ABWE has used healthcare ministry to take the gospel and the love of God to people around the world. ABWE's 3 hospitals provide multi-disciplinary care and ministry: two in Togo, West Africa and one in South Asia. ABWE also has a number of smaller medical ministries, and sends several short-term teams each year to engage in itinerant clinics to underserved populations.

WorldVenture Hospital in Cote d'Ivoire

Booth 108

<https://www.worldventure.com>
Josh Wohlgemut
joshw@worldventure.net
(573) 692-4930



The hospital has been called "the single most effective evangelism tool in Africa" for WorldVenture missionaries, treating 28,000+ patients every year. In a population plagued with HIV, malaria, and malnutrition, dedicated workers provide medical, technical, and spiritual aid to the impoverished and unreached people in northern Cote d'Ivoire.

Mission of Hope Clinic

Booth 109

<http://www.missionofhopeclinic.com>
Janet Lowe
hopeforraytown@hotmail.com
(816) 356-4325



Bridging the healthcare gap by providing primary, comprehensive and transitional services in a faith-based environment, Mission of Hope Clinic serves the uninsured population living at 200% FPL or below. Mission of Hope is a local safety net clinic sharing the gospel of Christ through medical missions in this community.

EXHIBITORS

Living Room Ministries International

Booth 110

<http://www.livingroominternational.org>
Dennis McGowan
dennismcgowan@sbcglobal.net
(530) 246-0693



Living Room in Kenya creates a community of compassion that honors life and offers hope by providing a hospice home where no one has to die alone; extending quality care to patients faced with life-threatening illnesses; providing emotional and tangible support to families during their loved one's illness and time of bereavement; providing palliative care education for health care providers.

Baptist Medical & Dental Mission International

Booth 111

<http://bmdmi.org>
Will Holder
will@bmdmi.org
(601) 544-5007



Baptist Medical and Dental Mission International (BMDMI) specializes in short-term mission trips focused on providing care to Honduras, Nicaragua, Nepal, & Guatemala. Since its establishment in 1974, BMDMI has founded more than 150 churches in Honduras and Nicaragua and treated more than two million patients with medical and dental care. BMDMI has more than 20 missionary family units serving.

Research Family Medicine Residency

Booth 112

Website: researchresidency.com
Contact: Billie Gould
Email: billie.gould@hcamidwest.com
Address: 6675 Holmes Ave, Suite 450 Kansas City, MO 64131



Research Family Medicine Residency

Research Family Medicine Residency is a community-based program in Kansas City, MO offering diverse patient base & strong inpatient experience in a tertiary care hospital & outstanding obstetrics experience with optional OB & Integrative Medicine Tracks. Opportunities for Medical Mission rotations exist. Clinic is NCQA Level 3 Patient Centered Medical Home. Our program is known for its nurturing environment and quality faculty. Visit www.researchresidency.com

EXHIBITORS

AFC Travel

Booth 113

<http://www.afctravel.com>
Anthony Hilden
anthony@afctravel.com
(952) 886-7686



AFC Travel, is a family-owned Christian Travel agency, providing international airfare to missionaries, churches, and non-profits. For your next trip, please contact AFC Travel (sales@afctravel.com or 1-800-599-2925). We would love to provide you a quote for just one ticket or a large group. Our experience, and relationships with the airlines, has earned us some of the best contracts on the market.

Haitian Christian Mission

Booth 114

<http://www.haitianchristianmission.org>
Angie Schuber
angie@haitianchristianmission.org
(844) 426-1974



Haitian Christian Mission exists to empower the Haitian church to build better communities and better relationships between God and man through Jesus Christ. The HCM hospital, serves a population of 100,000 Haitians in the Southeast region of Haiti. The Higgins Brothers Surgicenter for Hope will be open Spring 2016 with 3 additional operating rooms to perform more lifesaving surgeries.

*Thank You **AFC Travel** for providing
bags for the INMED Bookstore.*

*Stop by the conference bookstore to
check out our global health resources!*

EXHIBITORS

Blessings International

Booth 115

<http://www.blessing.org>
Barry Ewy
bewy@blessing.org
(918) 250-8101



Blessings International exists to provide medicine and medical supplies for medical missions, emergency disaster relief, and community medical development in places of the world where basic healthcare is lacking.

Emmanuel Hospital Association - USA

Booth 116

<http://www.ehaususa.org>
Howard Searle
hsearle@ehaususa.org
(630)802-5364



EHA-USA exists to encourage and facilitate prayer and financial support for Emmanuel Hospital Association, an indigenous [41 years] health care ministry to the poor and marginalized in North and NE India through their 20 hospitals and 42 community health and development projects, plus thematic ministries such as Disaster Relief, Palliative Care, and mainstreaming care for handicapped people.

Christian Journal for Global Health

Booth 117

<http://journal.cjgh.org/index.php/cjgh>
Daniel O'Neill
dwoneill@cjgh.org
(860) 377-4828



Christian Journal for Global Health is a peer-reviewed, scholarly, open-access journal with a diverse intercultural and inter-denominational Christian perspective. Integrative articles draw upon multiple disciplines in health, development and theology, and toward an increased understanding of health and a deeper level of conversation for best practices in under-served populations around the world.

EXHIBITORS

YWAM Ships, Kona, HI

<http://ywamships.net>
Kimberly Ward
info@ywamships.net
(808) 757-9150

Booth 118



YWAM Ships, Kona exists to reach the most isolated islands in the Pacific. Using ships to access villages is not just the best option...it is the only one. Come on board the m/v PACIFIC LINK and help bring hope to the isolated islands of Papua New Guinea, Panama, and the Marshall Islands. We rely on a global volunteer base to help provide basic education and health care to places in desperate need.

Docs Who Care

<http://www.docswhocare.com>
Michael Seward
mseward@docswhocare.com
(913) 397-7800

Booth 119



Docs Who Care provides physician and mid-level staffing in MO, KS, IA, NE and CO. Consider joining our team serving rural communities for a limited number of days a month, allowing for work/life balance to pursue family, medical missions, and outside interests! Learn more at: www.DocsWhoCare.com Speaker Dr. Gary Morsch is the founder of both Docs Who Care and Heart to Heart International.

Friday and Saturday Only

Register for the 2017 EMMC

Only \$100

Purchase 2017 Registration at the Conference Bookstore
No Refunds Available

EXHIBITORS

Christian Health Service Corps

Booth 120

<http://www.healthservicecorps.org/moto/>
 Greg Seager
info@healthservicecorps.org
 (210) 888-9182



Christian Health Service Corps is a ministry of Christian doctors, health professionals and health educators serving the poor in places that have little or no access to healthcare. We provide compassionate, life-saving health services throughout Africa, Asia, and Latin America. Our missionary doctors and health professionals are often the only access to care for families in poor communities.

Gospel for Asia

Booth 121



<http://www.gfa.org>
 Shareen Orchard
events@gfa.org
 (972) 300-7777

Gospel for Asia's mission is to share the Good News of Jesus with those who have never heard his name.

mdBriefCase Group Inc.

Booth 122

<https://www.mdbriefcase.com>
 Janet Kimura
janet.kimura@mdbriefcase.com
 (416) 488-5500



mdBriefCase Group Inc. is a leading provider of online, accredited, medical continuing education, offering a wide range of programs designed to meet the needs of healthcare professionals (HCPs), including physicians, nurses, pharmacists, and other healthcare workers. AdvancingPractice.com offers HCPs accredited, certificate-level programs designed to maintain, expand and advance their practice.

EXHIBITORS

Hope Family Care Center

Booth 123

<http://hopecenterkc.org/hope-center-programs/hope-family-care-center/>
Tom Kettler
tkettler@aol.com
(816) 618-6500



Hope Family Care Center (HFCC) is a faith-based, patient-centered medical facility providing quality primary health care to our underserved community in Kansas City, Missouri's east side. Our community is a medical desert with limited health care options. HFCC is the only primary care provider operating within our service area, and one of few community options. All patients are provided the same quality of care at HFCC, including the uninsured, as well as patients with Medicaid, Medicare, and commercial insurance. We hope to partner with and empower all patients in their health care, which is exemplified by the provision of an affordable sliding scale fee for the uninsured. In addition, HFCC is committed to providing culturally competent care, while continuing to develop a diverse board and staff. HFCC was recently designated as a National Health Service Corps approved site.

Dignity:Liberia

Booth 124

<http://www.dignityliberia.org>
Kathi Gutierrez
kathimgut@gmail.com
(816) 217-8751



Dignity:Liberia is committed to bringing restoration and hope to women with fistula, and their communities, through healing, education, and prevention.

EBCFO

Booth 125

<http://www.ebcfo.com>
Jamie Roach
jamie.roach@ebcfo.com
816)674-8474



EBCFO is a virtual CFO firm that helps start-ups, non-profit organizations and e-commerce companies at all stages by offering bookkeeping, accounting, cash flow management, payroll services and CFO services. We are not just another accounting, consulting or advisory firm. We help business owners and decision makers like you move beyond putting numbers in buckets - we make sense of those numbers so you can make smarter business decisions. Focus on what you love with EBCFO.

EXHIBITORS

Gallagher Charitable International Insurance Services

Booth 126



<https://www.travelwithgallagher.com>
Dana Cowl
dana_cowl@ajg.com
(803) 451-3016

Gallagher Charitable provides multiple lines of insurance to minimize risk and protect religious and non-profit organizations and individuals while they serve others around the world. We constantly strive to provide valuable products and services tailored to meet the needs of the international missions community. Contact us today at 800-922-8438 or visit our website, www.TravelwithGallagher.com

INMED

Booth 127

<http://www.inmed.us>
Elizabeth Burgos
office@inmed.us
(816)444-6400



The Institute for International Medicine (INMED) exists to equip healthcare professionals and students with the unique skills necessary to effectively serve the world's most forgotten people. We are a nonprofit educational organization that offers didactic instruction in the full range of global health topics via online, hybrid, and in-classroom courses, as well as through conferences. We also complement such instruction with supervised service-learning experiences for healthcare students and professionals at over 45 INMED Training Sites in 20 low-resource countries.

Did You Know?

INMED offers training courses in

Helping Babies Breathe

and

Ultrasound for Primary Care

throughout the year...

Sign up online for an upcoming course at
www.inmed.us

Not sure which INMED offering you qualify for?

Visit inmed.us/prospective-learners to find out.

Discover opportunities for:

- Medical Students (Before Clinical Rotations)
- Medical Students (After Clinical Rotations)
- Resident Physician
- Attending Physician
- Nursing Student Undergrad
- Nursing Student Adv Practice
- Nurse
- Nurse Advanced Practice
- Pharmacy Students (Before Clinical Rotations)
- Pharmacy Students (After Clinical Rotations)
- Pharmacist
- Physician Assistant Students (Before Clinical Rotations)
- Physician Assistant Students (After Clinical Rotations)
- Physician Assistants
- Midwife
- Midwifery Student
- Public Health Student
- Public Health Specialist
- Undergraduate Student
- Healthcare Administrator Student
- Healthcare Administrator
- Physical/Occupational Therapy Student
- Physical/Occupational Therapist
- Dental Students (Before Clinical Rotations)
- Dental Students (After Clinical Rotations)
- Dentist
- Dietitian Student
- Dietitian
- Non-Healthcare Personnel
- Other Healthcare Personnel



BOOKSTORE

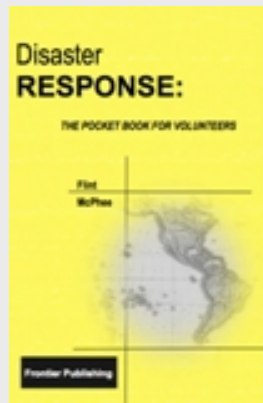
Bookstore Hours

Friday 9:00 am - 5:00 PM
Saturday 8:30 am - 12:10 PM

Conference Bookstore is located on Main Floor.

BEST SELLERS

Disaster Response Handbook



*Available at the
Conference Bookstore*

INMED Book, 2nd Edition



*Available at the
Conference Bookstore*

“Equipping Healthcare Professionals & Students to Serve the Forgotten”

EQUIPPING

INMED Equips via...

GREAT NEED + **DESIRE TO SERVE**

Forgotten and underserved individuals exist in every nation. Many lack basic medical care and public health.

Healthcare professionals and students want to personally take action.

OUTCOMES

INMED's graduates are devoting all or some of their careers to serving the forgotten at home and around the world.

- **Education**
 - Medicine & Public Health Hybrid Courses
 - Global Health Online Courses
 - Helping Babies Breathe Training
 - Low-Resource Ultrasound Training
 - CME and CNE Activities

- **Experience**
 - Service-Learning/Rotation Opportunities in 24 Nations
- **Connections**
 - Annual Exploring Medical Missions Conference
- **Certification/Credentials**
 - DIM&PH and DIPH Diploma



www.inmed.us

INMED'S MISSION

CONTINUING EDUCATION

2016 EXPLORING MEDICAL MISSIONS CONFERENCE
MAY 20-21, 2016

OBJECTIVES:

At the completion of this conference, I am able to:

- Articulate the characteristics of compassionate health care
- Review disease mitigation strategies
- Discuss strategies to improve community health in a low resource community
- Describe techniques to cross-cultural boundaries
- Develop steps to engage into humanitarian health work

Physicians

Institute for International Medicine is accredited by the Missouri State Medical Association to provide continuing medical education for physicians.

The Institute for International Medicine designates this live activity for a maximum of 8.75 *AMA PRA Category 1 Credit(s)*[™]. Physicians should claim only the credit commensurate with the extent of their participation in the activity.

Desirable Physician Attributes/Core Competencies

ACGME/ABMS

- Patient Care & Procedural Skills
- Medical Knowledge

IOM

- Work in Interdisciplinary Teams
- Employ Evidence-Based Practice

IEC

- Value/Ethics for Interprofessional Practice
- Roles/Responsibilities
- Interprofessional Communication
- Teams and Teamwork

Nurses

Institute for International Medicine is an approved provider of continuing nursing education by the Midwest Multistate Division, an accredited approver by the American Nurses Credentialing Center's Commission on Accreditation.

Approval to present this program does not imply ANCC or MSD approval or endorsement of any commercial products. The participant will receive 8 contact hours. Instructions for obtaining certificates will be distributed at the conclusion of the program.

Provider # 717-V

Nurse Outcome:

80% of nurses who attend will self-report that their "new" learning, obtained at the conference, will improve the nursing care they provide to their patients.

Nurses must sign in both days to receive full credit.

Don't see your profession? INMED can provide a Certificate of Completion to conference attendees with the *AMA PRA Category 1 Credit(s)*[™] statement. Complete the conference evaluation and request your Certificate.

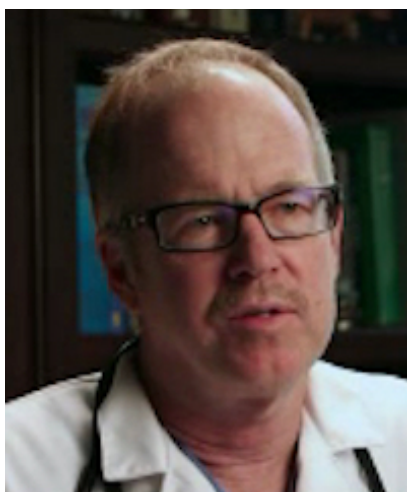
AWARDS

Ted & Kim Higgins, 2016 Comninellis Award for Compassionate Service To Humanity Award Recipients



As a general surgery resident at Yale University, Ted leaped at the opportunity to serve under mentors for six months at Hospital Albert Schweitzer in Haiti. Inspired through that experience, Ted and his wife, Kim, embarked on a twenty-five-year routine of providing surgical care in Haiti and the Dominican Republic – a pattern of service that continues even today. With the vision of further expanding continuity care for residents of these nations, the Higgins masterminded and funded establishment of the Higgins Brothers Surgical Center in partnership with Haiti Christian Missions. With a parallel vision of inspiring future international healthcare volunteers, the Higgins have both financed and provided their expertise for the INMED conference event since its inception.

Tom Kettler 2016 INMED National Healthcare Service Award Recipient



Known to hundreds of patients in Stanley, Kansas, as a quality family physician, Dr. Kettler has remained unwavering in his commitment to Kansas City's most needy populous: those residing in the urban core. There was once no primary care facility available in the immediate neighborhood – a particular obstacle for the numerous patients without transportation. After years of vision casting and overcoming financial challenges, in 2009 Dr. Kettler witnessed the formal opening of Hope Family Care Center at 3027 Prospect Ave. Says Kettler, "My Christian faith was primary in my pursuit of a medical career. I enjoy helping others and the challenge of solving problems. Medicine is a great field for life-long learning and service to others."

AWARDS

Richard Randolph

2016 INMED Humanitarian Crisis Response Award Recipient



Dr. Randolph is a family physician from the Kansas City area who first distinguished himself as a West Point Military Academy graduate, adding credentials including the INMED Academic Qualification in International Medicine & Public Health and appointed Medical Officer for Joint Special Operations Command at Fort Bragg. In 2015, Dr. Randolph became Chief Medical Officer for Heart to Heart International, and immediately shipped out to Liberia. On location at the Tappita Ebola Treatment Unit he served afflicted people for six months – just one of his extended deployments since 1993 providing healthcare in seven different nations. Today he diligently applies his hard-won insight through scaling up preparedness capability among hundreds of dedicated disaster responders.

Scott Kujath

2016 INMED International Medicine Award Recipient



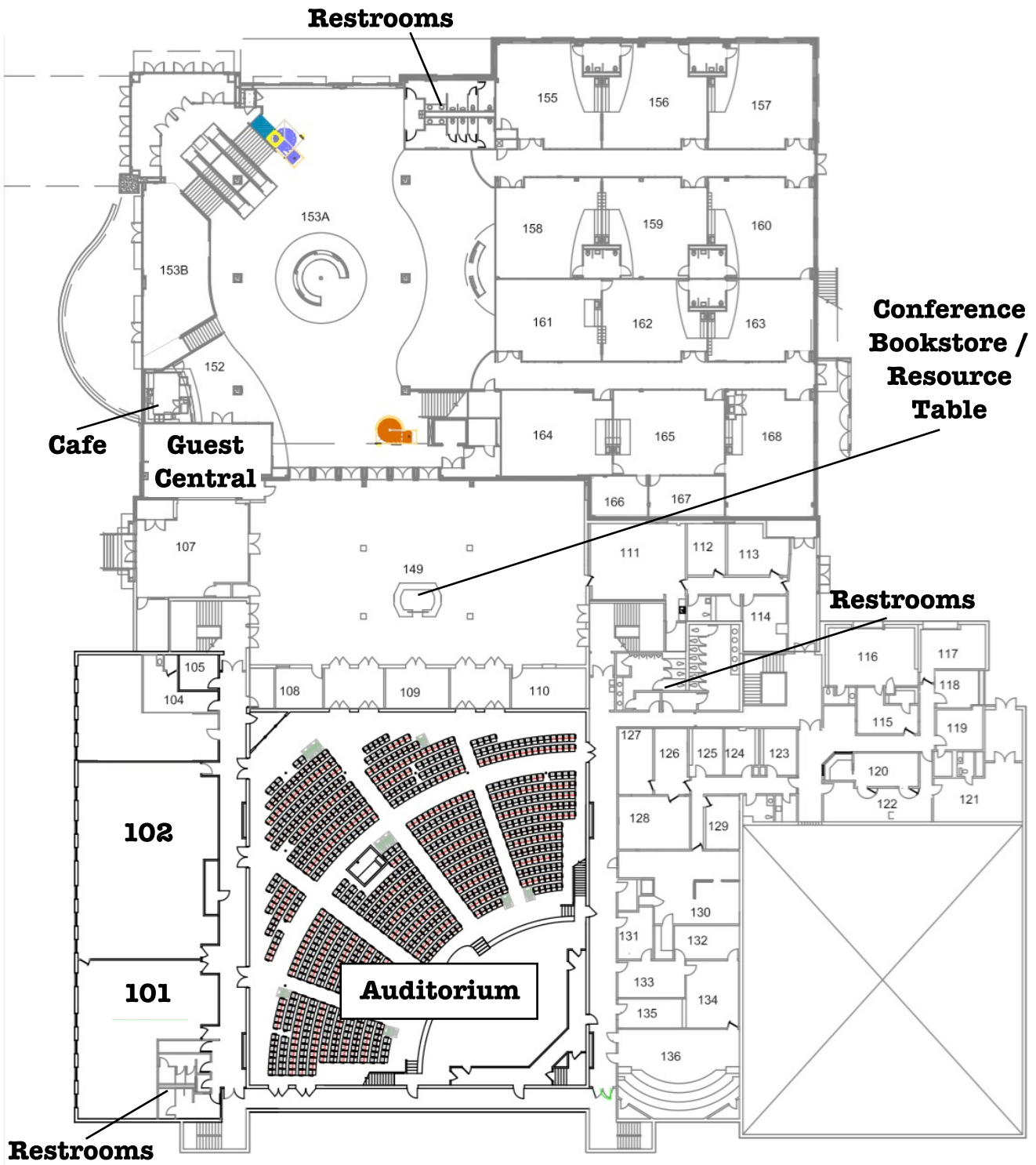
Well known in Kansas City as an exceptional vascular surgeon, Dr. Kujath's service reaches beyond the city's borders. In cooperation with First Baptist Church of Raytown, Missouri, he leads the Mission of Hope Clinic, providing primary medical care and dental care to the region's most under resourced people. Dr. Kujath also consistently serves in eastern Africa, both in providing direct medical care, as well as, pioneering in the innovative field of hospice and palliative care in connection with The Living Room, who provides quality of life for Kenyans affected by HIV-AIDS and other life-threatening illnesses. Casting an effective vision for others to follow, Dr. Kujath has generously supported student scholarships for the INMED Conference since 2013.

Howard Searle, 2016 INMED Cross-Cultural Healthcare Leadership Award Recipient

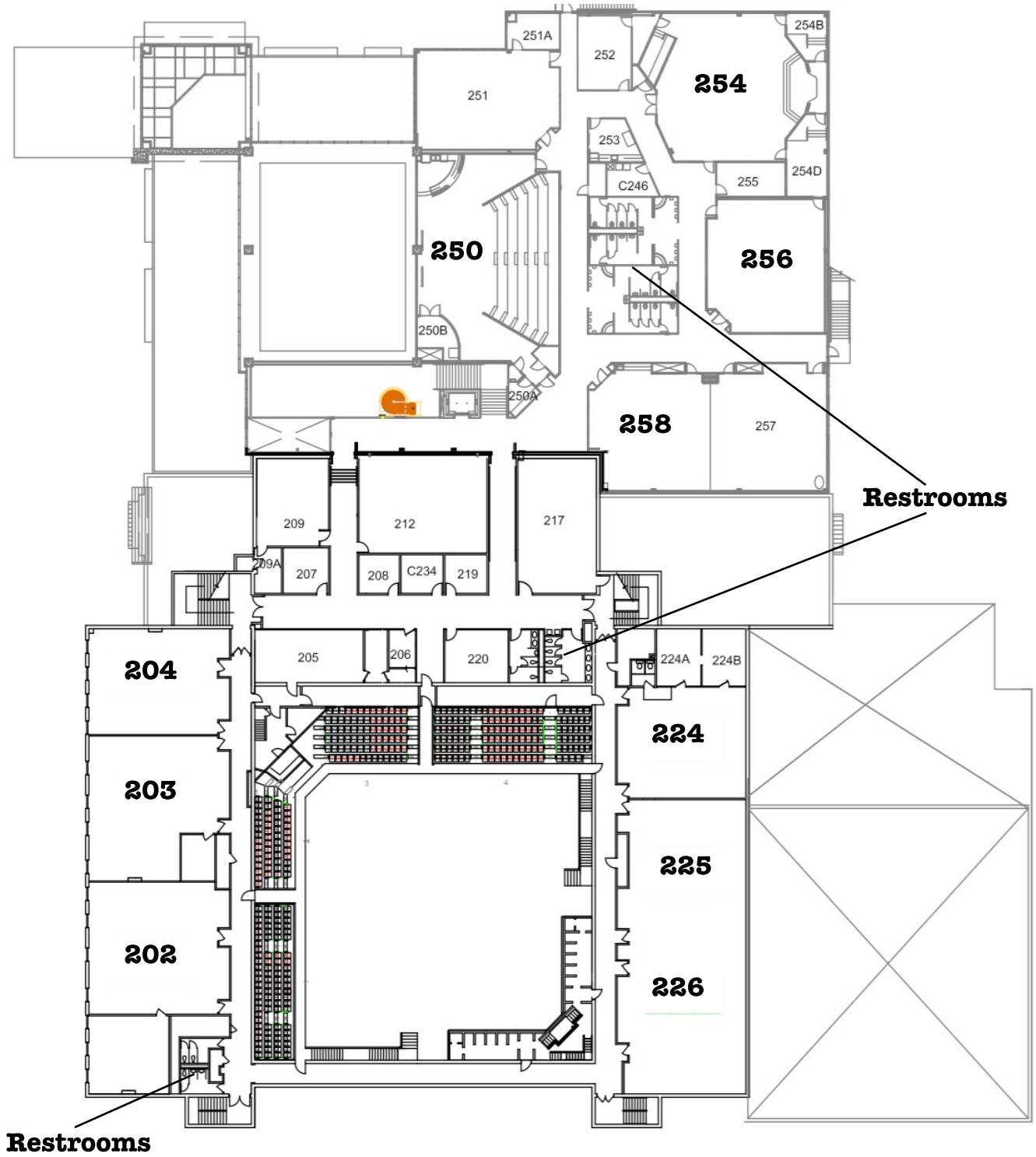


In 1965 this Canadian surgeon was inspired over the unique needs of India. In 1965 the Indian government began rejecting visa requests of US healthcare personnel. But Canadians still enjoyed ready access. In the critical years between 1969 and 1974, Dr. Searle was part of the innovative team of Indian leaders who guided Emmanuel Hospital Association (EHA) from reliance on international staff and donors to becoming entirely self-sufficient. Since then, EHA has grown to become the world's largest indigenous medical mission. Dr. Searle continued serving at their side until 2005, when he retired to become Executive Director of EHA's United States affiliate, a role in which he continues to serve today.

GRACEWAY MAIN FLOOR



GRACEWAY 2ND FLOOR



FRIDAY SCHEDULE

8:00 - 8:50 AM	Registration and Visit Exhibitors		Lobby
9:00 - 9:45 AM	Plenary Session 1	Gary Morsch, MD	Auditorium
	MORNING DIDACTICS		
10:00 - 10:30 AM	Breakout 1		
	An Open Door*	Wendy Nyhus, BSN, RN	Room # 225
	Holistic Integration for Maximum Effectiveness in Different Cultures	Jeff Adams, PhD	Room # 102
	Adult Assessment with Limited Resources	Nicholas Comninellis, MD, MPH	Room # 101
	Maternal/Newborn Care	Paul Larson, MD, DIM&PH	Room # 203
	Compassionate Refugee Health Care	Joseph LeMaster, MD, MPH	Room # 202
	Community Development	Lani Kay Ackerman, MD	Room # 224
	Disease Mitigation	Rick Randolph, MD	Room # 258
10:40 - 11:10 AM	Breakout 2		
	Compassionate Refugee Health Care	Joseph LeMaster, MD, MPH	Room # 202
	Community Development	Lani Kay Ackerman, MD	Room # 224
	Holistic Integration for Maximum Effectiveness in Different Cultures	Jeff Adams, PhD	Room # 102
	Disease Mitigation	Rick Randolph, MD	Room # 258
	Pediatric Assessment with Limited Resources	Paul Bauer, MD	Room # 203
	Global Health Research and Innovation	Brad Gautney, PNP, MPH	Room # 101
	An Open Door*	Wendy Nyhus, BSN, RN	Room # 225

...FRIDAY SCHEDULE

11:20 -11:50 AM	Breakout 3		
	An Open Door*	Wendy Nyhus, BSN, RN	Room # 225
	Maternal/Newborn Care	Paul Larson, MD, DIM&PH	Room # 203
	Compassionate Refugee Health Care	Joseph LeMaster, MD, MPH	Room # 102
	Community Development	Lani Kay Ackerman, MD	Room #224
	Adult Assessment with Limited Resources	Nicholas Comninellis, MD, MPH	Room # 101
	Pediatric Assessment with Limited Resources	Paul Bauer, MD	Room # 202
	Global Health Research and Innovation	Brad Gautney, PNP, MPH	Room # 258
11:50 - 12:15 PM	Optional Session 1		
	Chapel*		Auditorium
	Poster Presentations		Lobby
	Visit Exhibitors		Lobby
12:15 - 1:30 PM	Lunch/Visit Exhibitors		Lobby
1:30 - 2:15 PM	Plenary Session 2	Brad Gautney, PNP, MPH	Auditorium
AFTERNOON HANDS-ON SKILLS			
2:25 - 3:25 PM	Breakout 4		
	Off to Adventures: What You Need Before You Go	Scott Armistead, MD	Room # 258
	Ultrasound	John Gibson, MD	Room # 203
	Adult Assessment with Limited Resources	Nicholas Comninellis, MD, MPH	Room # 225
	Pediatric Assessment with Limited Resources	Paul Bauer, MD	Room # 226
	Wound Care/Suture	Ted Higgins, MD	Room # 102
	Community Assessment	Lani Kay Ackerman, MD	Room # 224
	Maternal/Newborn Care	Paul Larson, MD, DIM&PH	Room # 202

*Faith-Based Session

..FRIDAY SCHEDULE

3:35 - 4:35 PM	Breakout 5		
	Off to Adventures: What You Need Before You Go	Scott Armistead, MD	Room # 258
	Ultrasound	John Gibson, MD	Room # 203
	Adult Assessment with Limited Resources	Nicholas Comninellis, MD, MPH	Room # 225
	Pediatric Assessment with Limited Resources	Paul Bauer, MD	Room # 226
	Wound Care/Suture	Ted Higgins, MD	Room # 102
	Community Assessment	Lani Kay Ackerman, MD	Room # 224
	Maternal/Newborn Care	Paul Larson, MD, DIM&PH	Room # 202
4:40 - 5:40 AM	Breakout 6		
	Off to Adventures: What You Need Before You Go	Scott Armistead, MD	Room # 258
	Ultrasound	John Gibson, MD	Room # 203
	Adult Assessment with Limited Resources	Nicholas Comninellis, MD, MPH	Room # 225
	Pediatric Assessment with Limited Resources	Paul Bauer, MD	Room # 226
	Wound Care/Suture	Ted Higgins, MD	Room # 102
	Community Assessment	Lani Kay Ackerman, MD	Room # 224
	Maternal/Newborn Care	Paul Larson, MD, DIM&PH	Room # 202

SATURDAY SCHEDULE

9:00 - 9:45 AM	Plenary Session 3	Lani Ackerman, MD	Auditorium
ROUND TABLE DISCUSSIONS			
9:50 - 10:10 AM	Breakout 7		
	Publishing Research: Letting Your Experience and Results See the Light of Day	Daniel O'Neill, MD	Room # 202
	Ethical Dilemmas in International Medicine	Scott Kujath, MD	Room # 102
	Family & Medicine: the balance	Scott Armistead, MD	Room # 224
	Global Health Education	Nicholas Comninellis, MD, MPH	Room # 203
	Your Role in Medical Missions	Paul Larson, MD, DIM&PH	Room # 225
	Partnering with National Leaders	Jay Grimwood	Room # 258
10:20 - 10:40 AM	Breakout 8		
	Publishing Research: Letting Your Experience and Results See the Light of Day	Daniel O'Neill, MD	Room # 202
	Ethical Dilemmas in International Medicine	Scott Kujath, MD	Room # 102
	Family & Medicine: the balance	Scott Armistead, MD	Room # 224
	Global Health Education	Nicholas Comninellis, MD, MPH	Room # 203
	Your Role in Medical Missions	Paul Larson, MD, DIM&PH	Room # 225
	Partnering with National Leaders	Jay Grimwood	Room # 258
10:45 - 11:00 AM	Optional Session 2		
	Poster Presentations		Lobby
	Last Chance to Visit Exhibitors		Lobby
11:00 - 11:40 AM	Plenary Session 4	Nicholas Comninellis, MD, MPH	Auditorium



**SAVE THE DATE
FOR THE
2017 EMMC**

MARCH 24 - 25



Equipping Healthcare Professionals and
Students to Serve the Forgotten